

# NaviFUS

## International Academic FUS Symposium

September 22<sup>nd</sup>, 2024 15:30-18:00

@NaviFUS,Taipei,Taiwan

### Save the date and join us!

Discover the development of the NaviFUS system with us and we'll share more clinical evidence in Blood-Brain-Barrier (BBB) Opening and Neuromodulation.

**Moderator**



**Dr. Kuo-Chen Wei**

**Keynote Speaker**



**Dr. Robert Fisher**

**Speakers**



**Dr. Hsiang-Yu Yu**



**Dr. Terence O'Brien**



**Dr. Shayan Moosa**



**Dr. Ko-Ting Chen**



**Dr. Rou-Shayn Chen**

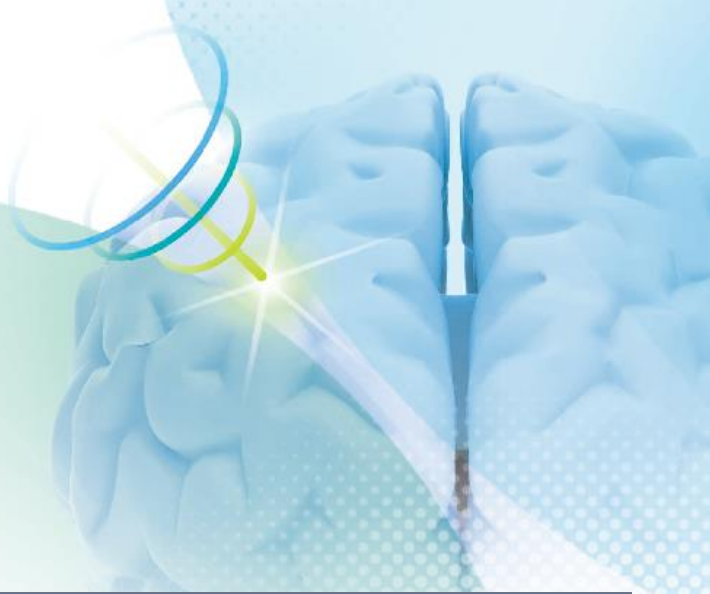


**Dr. Raag Airan**

# NaviFUS

## International Academic FUS Symposium

September 22<sup>nd</sup> , 2024 15:30-18:00  
@NaviFUS,Taipei,Taiwan



Program		
1530-1600	Registration / Welcome reception	
1600-1605	Opening Remark	<b>Moderator:</b> <b>Dr. Kuo-Chen Wei</b> Director of Department of Neurosurgery, Chang Gung Memorial Hospital Linkou Medical Center
	Session 1 - FUS in Neuromodulation	
1605-1615	Why is FUS for Epilepsy Needed?	<b>Keynote Speaker:</b> <b>Dr. Robert Fisher</b> Director of the Stanford Epilepsy Center, Neurophysiologist, Neurologist
1615-1625	The Early Results of Nuromodulation for Drug-resistant Epilepsy	<b>Dr. Hsiang-Yu Yu</b> Director of the Epilepsy Department, Taipei Veterans General Hospital Neurological Center
1625-1635	Safety and Efficacy of Pulsed FUS in Drug-Resistant TLE	<b>Dr. Terence O'Brien</b> Chair of Medicine (Neurology) and Head, Central Clinical School, Monash University
	Session 2 - FUS in BBBO	
1635-1645	Neuronavigation-Guided LIFU for Sonodynamic Therapy and Neuromodulation	<b>Dr. Shayan Moosa</b> Assistant Professor of Neurosurgery, University of Virginia Health
1645-1655	Neuronavigation-Guided tFUS in Brain Tumor: From Bench to Clinic	<b>Dr. Ko-Ting Chen</b> Assistant Professor of Neurosurgery, Chang Gung Memorial Hospital Linkou Medical Center
	Session 3 - FUS in New Treatment	
1655-1705	Neuromodulation of Low Intensity Focused Ultrasound: a new prospect for the application in treating Parkinson's Disease	<b>Dr. Rou-Shayn Chen</b> Professor of Neurology, Chang Gung Memorial Hospital Linkou Medical Center
1705-1715	Forward to the Future: Cutting-Edge Solutions with LIFU	<b>Dr. Raag Airan</b> Assistant Professor of Radiology, Stanford University
1715-1755	Panel Discussion	
1755-1800	Closing Remark	<b>Moderator:</b> <b>Dr. Kuo-Chen Wei</b> Director of Department of Neurosurgery, Chang Gung Memorial Hospital Linkou Medical Center



Scan Me and  
Register Now!